

PF-ALU/PL

ANCHORING SYSTEMS FOR VENTILATED FAÇADES



TECHNICAL SPECIFICATIONS

Stainless steel alloy Aisi 304 (A2) standard [A4 upon request]

Elastic limit [N/mm ²]	175
Elasticity module [N/mm ²]	210.000
Transversal elasticity module [N/mm ²]	81.000
Poisson coefficient	0.3
Thermal dilatation coefficient [1/C]	1.2.10 ⁻⁵
Density [kg/m ³]	7.850

Aluminium EN AW - 6005A

Product shape	Extruded profile
Elastic limit with 0.2 deformation [N/mm ²]	225
Breaking point [N/mm ²]	270
Minimum lengthening	8
Elasticity module [N/mm ²]	70.000
Trasversal elasticity module [N/mm ²]	27.000
Poisson coefficient	0.3
Thermal dilatation coefficient [1/C]	2.3.10 ⁻⁶
Density [Kg/m ³]	2.700

DESCRIPTION

Fixed anchoring of a great capacity and resistance specifically designed to be mounted on PF-ALU aluminum profiles. The technique implemented in this type of anchoring features the use of a stamped double flat stainless steel bar and machined with adjustment bushings that are inserted in the single or continuous slotting carried out in the axis of the claddings to be installed. More specifically, the sizing and shaping of these anchors is done by double folding panels with a variable base. Each of these models is used depending on the dimensions of the cladding (thicknesses of 3, 4 and 5 cm) and of their position on the façade. The intersection GR-PL-100 model joins the cladding panels on the corners with the possibility of joining up to 4 panels. The GR-PL-46 model, on the other hand, only enables two panels to be connected.



GR-PL-100

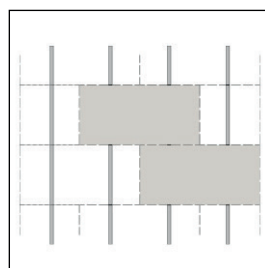
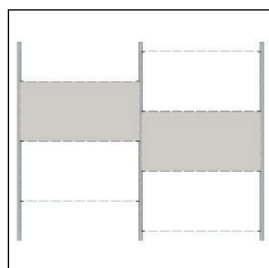
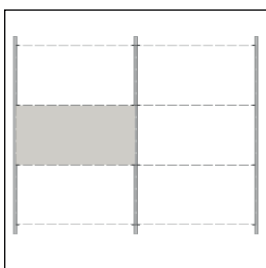


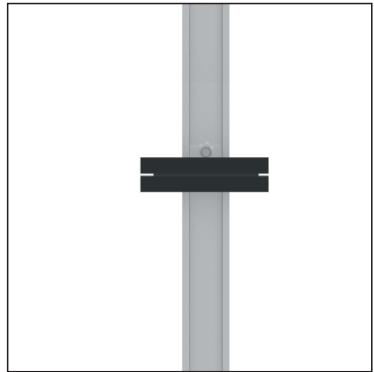
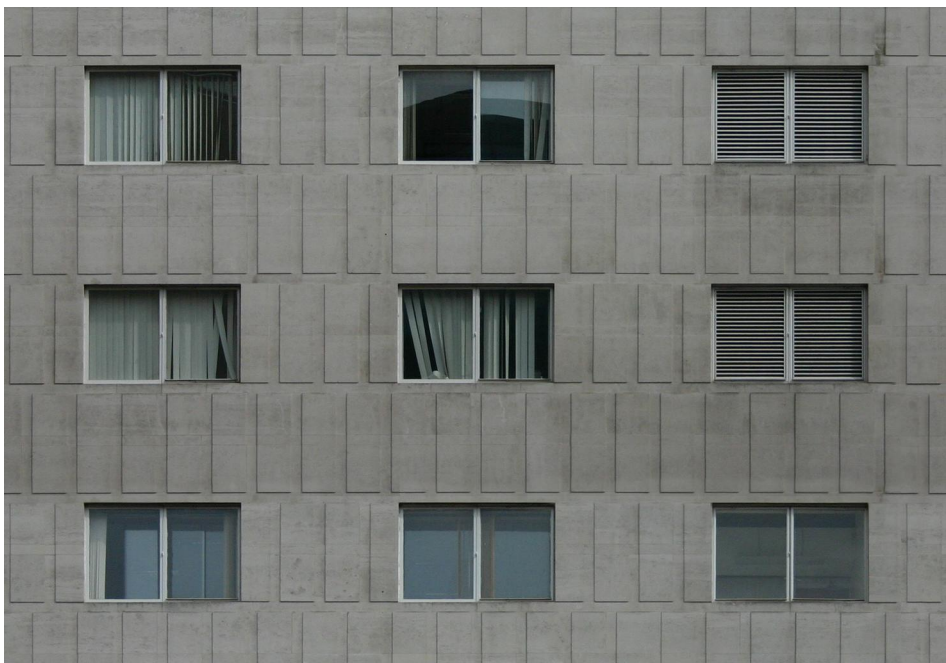
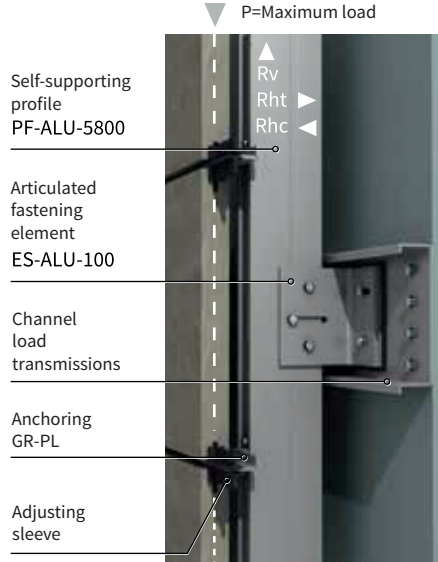
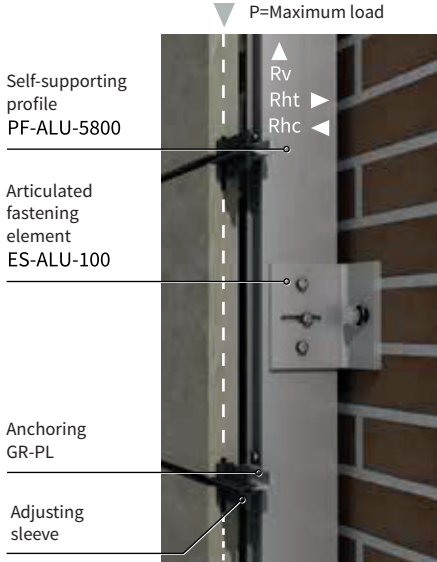
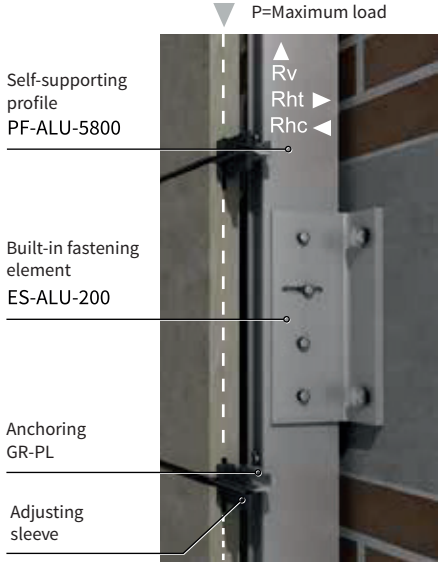
GR-PL-100 MEDIA



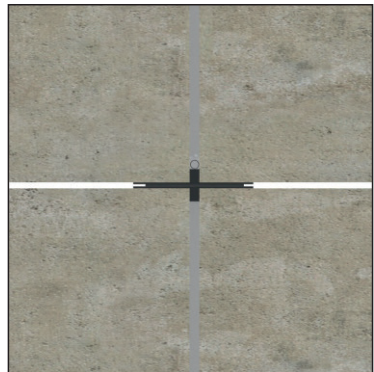
GR-PL-46

- Minimum cladding thickness: 3 mm.
- Recommended minimum joint: 6 mm. horizontal and 3mm. vertical.
- Machined: Punctual groove
- Calculations made with maximum densities up to 3000 kg/m³.





Front view Anchoring GR-PL assembled on PF-ALU profile



Front view Anchoring GR-PL with plaque fixed

	GR-PL-46	GR-PL-100
LOAD [Kg]	84,1	107,2

System designed to solve the fastening of claddings with horizontally positioned panels using two continuous joints (alternatively possible to use 50% locked joints in large panels). In addition, the PF-ALU/PL system can be used because it allows the installation of panels in a vertical position using locked joints.



export@nordicext.com



www.nordicext.com



+90 216 594 50 30



Ferhatpasa Mahallesi
Akdal Sokak No:5
Atasehir / ISTANBUL
TURKEY

NORDIC