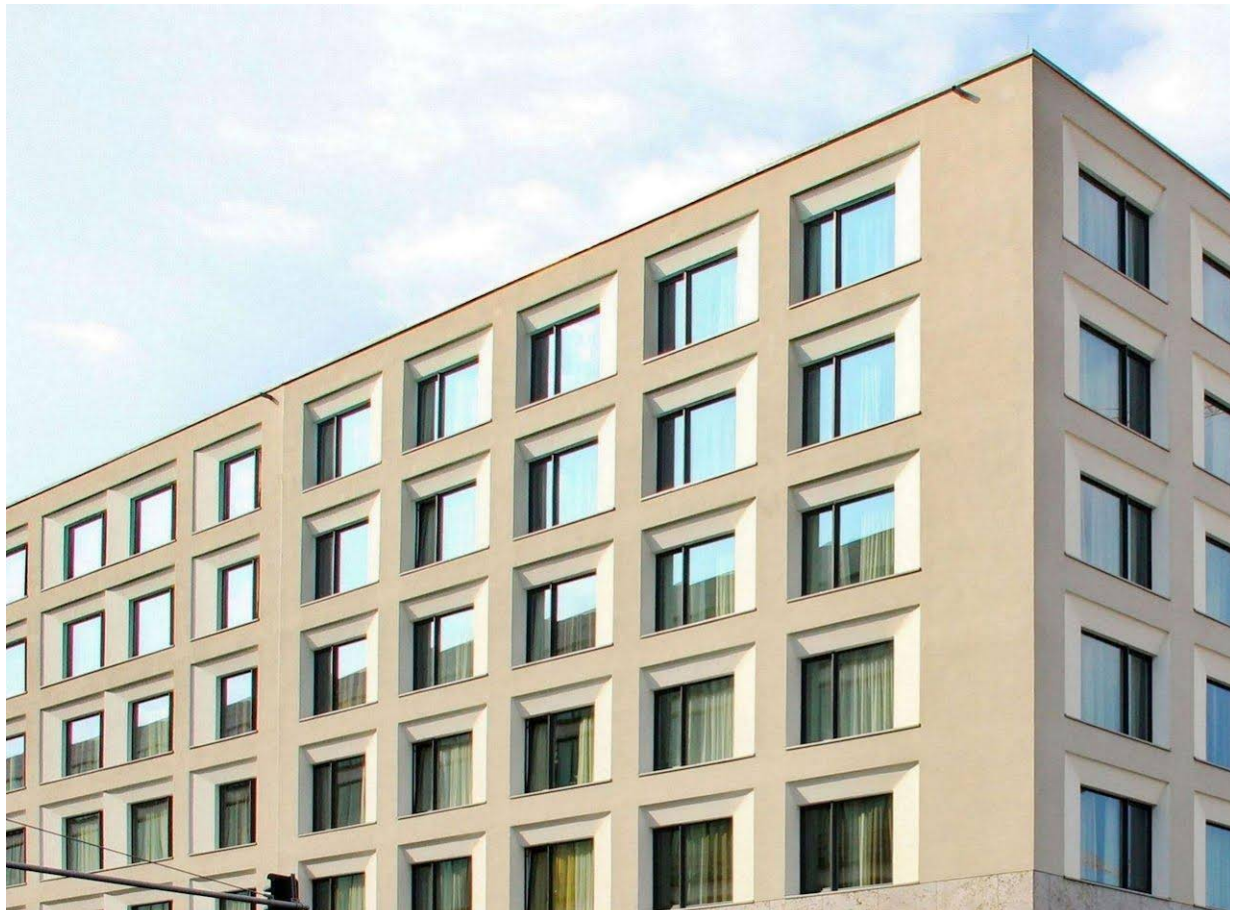


PF-ALU/HPL

ANCHORING SYSTEMS FOR VENTILATED FAÇADES



Stainless steel alloy Aisi 304 (A2) standard [A4 upon request]

Elastic limit [N/mm ²]	175
Elasticity module [N/mm ²]	210.000
Transversal elasticity module [N/mm ²]	81.000
Poisson coefficient	0.3
Thermal dilatation coefficient [1/C]	1.2.10 ⁻⁵
Density [kg/m ³]	7.850

Aluminium EN AW - 6005A

Product shape	Extruded profile
Elastic limit with 0.2 deformation [N/mm ²]	225
Breaking point [N/mm ²]	270
Minimum lengthening	8
Elasticity module [N/mm ²]	70.000
Trasversal elasticity module [N/mm ²]	27.000
Poisson coefficient	0.3
Thermal dilatation coefficient [1/C]	2.3.10 ⁻⁶
Density [Kg/m ³]	2.700

DESCRIPTION

With this profile-clip, Nordic Ext has excelled itself and any other product existing on the market given its great versatility and speed when being mounted, allowing the laying out of the vertical profiles at random, regardless of the position of the vertical joints of the cladding. The system's performance during assembly is exceptional because screws are not required to fasten the panels, ensuring the cladding's stability through an innovative design of the centering elements that offer the possibility of using different thicknesses in the vertical joints (1 mm to 10 mm) as it centers and favors the flatness of the cladding. It is specially recommended for smaller size cladding cut-offs in vertical position, with continuous horizontal joints or free vertical joints.



GR-HPL-TS anchoring



GR-HPL-P anchoring



GR-HPL-TI anchoring



GR-HPL-PH anchoring



GR-HPL-PV anchoring



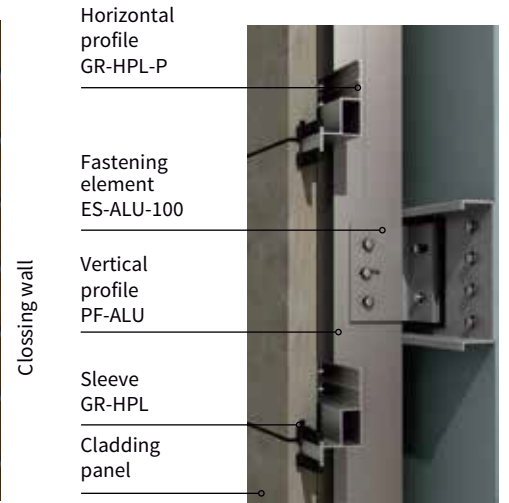
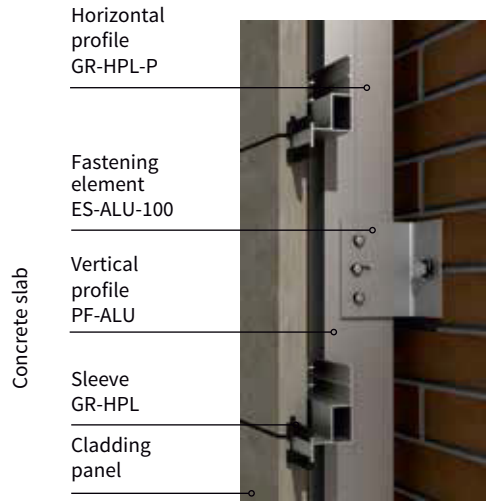
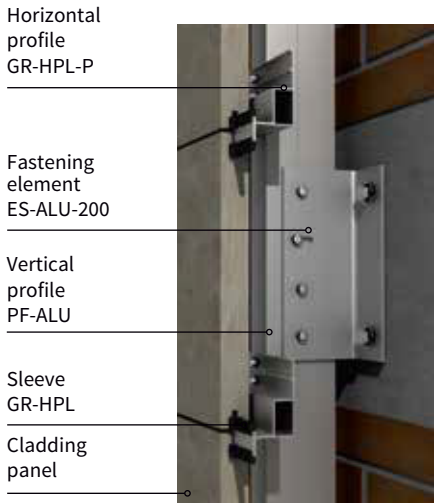
GR-HPL-V anchoring

- Minimum wall cladding thickness: 20 mm.

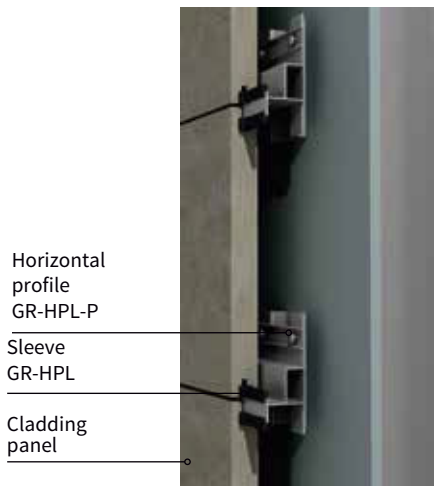
- Recommended minimum joint: 6mm horizontally and 6 mm vertically.

- Machining: with continuous slots, drills or visible flanges.

- Calculations made with maximum densities up to 3000 kg/ m³.



Drywall with Aquapanel



HPL Direct



HPL 40



HPL 60



HPL 120

System families PF-ALU/HPL

The horizontal profiles making up the PF-ALU/HPL system are marketed in 3 models: PF-ALU/HPL-40, PF-ALU/HPL-60 and PF-ALU/HPL-120 depending on the thickness, dimension and position of the cladding panels. These clip profiles are positioned parallel to the PF-ALU vertical profiles and the ES-ALU fastening elements in their three different versions, allowing preserving the system adjustment untouched. With the increase of the KNAUF type WM.es lightweight cladding structures, to which good vertical and horizontal flatness is assumed, new calculation tables have been studied to be able to install the HPL clip profiles and anchor them directly to the cladding structure and in parallel to the KNAUF vertical structure (EXP. ITEC. QP-IT-4158-01.A).

PF-ALU/HPL-40

Ideal horizontal profile to fasten low (40/60 cm) panels. Its small dimensions allow the optimization of the separation between the PF-ALU profiles, making it more suitable for panels in horizontal position with continuous horizontal joints and free vertical joints and thicknesses ranging from 10 to 20 mm. Requires slot e: 2mm de-beaded.

PF-ALU/HPL-60

Horizontal profile with the greatest inertia dimensioned to house panels of an intermediate height of 60/100 cm. This is the most commonly used clip profile model, as it covers most of the normally studied off-cuts. It also provides greater flexibility, as it can be adapted correctly to small off-cuts without losing any competitiveness, and to larger off-cuts without losing resistance. Requires slot e: 5.3 mm de-beaded. For thicknesses ranging from 20 to 50 mm.

PF-ALU/HPL-120

Horizontal profile with great inertia, especially designed to support large dimension pieces, preferably in vertical position, with continuous horizontal and free vertical joint. Requires slot e: 5,3 mm de-beaded (idem PF-ALU/HPL-60).



export@nordicext.com



www.nordicext.com



+90 216 594 50 30



Ferhatpasa Mahallesi
Akdal Sokak No:5
Atasehir / ISTANBUL
TURKEY

NORDIC